



THB

FAN COIL UNITS
LOW PROFILE, HORIZONTAL

- └ THBC
- └ THBE
- └ THBP



Model THB:

INNOVATIVE DESIGN SIMPLIFIES INSTALLATION AND SERVICE

Owners

AHRI Standard 440-certification ensures exacting performance. The THB fan-coil unit's 3-speed, direct-drive motor allows optimized cabinet airflow and sound performance. Enhanced sound levels are achieved through an electronic fan-speed controller (SCR) which allows further motor-speed tuning.

THBC concealed model fan-coil units are constructed of galvanized steel, surpassing the ASTM 125-hour, salt-spray test for corrosion and rust. Exposed-cabinet model THBE features durable, powder-coated, galvanealed steel that resists fading, scratches and fingerprints.

Concerned about Indoor Air Quality? Sloped drain pans are standard on all THB units, and are easily removed to provide access to the coils for cleaning. Optional stainless-steel drain pans and coil casings are available. IAQ lining options include foil-faced or elastomeric, closed-cell-foam insulation.

Designers

The THB unit's impressive list of standard features provides unparalleled design flexibility. Configuration options include rear-ducted or bottom-ducted return. Ceiling access is achieved through architectural-louvered or solid return-air panels, or a telescoping-duct panel for adjustable unit recessing.

Available with chilled-water or DX cooling coils, and hot-water, steam or electric heating coils, THB fan coils produce the ultimate in comfort and flexibility.

Contractors

THB horizontal fan coil units provide maximum performance while reducing installed cost to the contractor. Ultra-low-profile design (maximum 10" for concealed models; 12" for exposed cabinets) allows installation virtually anywhere. Bottom access to all components through available hinged-cover access doors makes service easy.

For fast-track jobs, the THB Quick Ship unit is available in 5, 10 or 15 days with an impressive list of unit options and controls.

Factory-Mounted Control Packages

A wide variety of control options and thermostats are offered. Factory-mounting and wiring of DDC controls by others is also available.

Silent Relays

Silent, solid-state relays are available for fan and electric-heat control in sound-sensitive environments.

THB Fan Coil Airflow	
Model	Airflow (SCFW)
THBC 20	331
THBP 20	265
THBE 20	253
THBC 25	448
THBP 25	414
THBE 25	404
THBC 30	771
THBP 30	620
THBE 30	604
THBC 40	793
THBP 40	768
THBE 40	743
THBC 50	1196
THBP 50	1069
THBE 50	1022
THBC 60	1440
THBP 60	1324
THBE 60	1258

Actual performance may vary based on model, options and operating conditions. Ask your Titus representative for complete performance information.



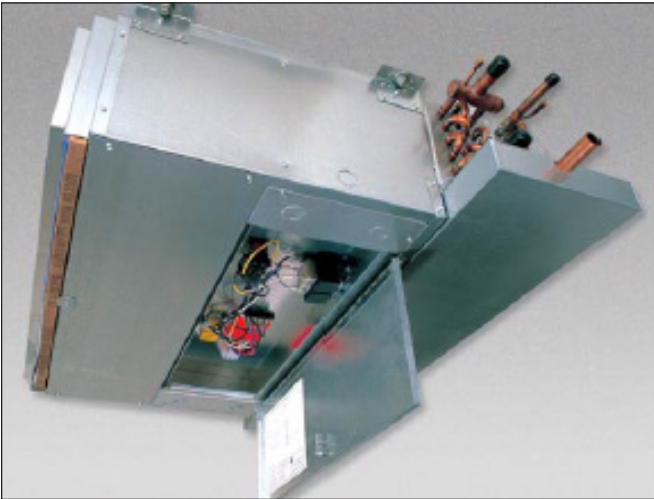
Factory-Furnished Valve Packages

Valve packages provided by the factory ensure proper fit, operation and performance.

Electric Heat

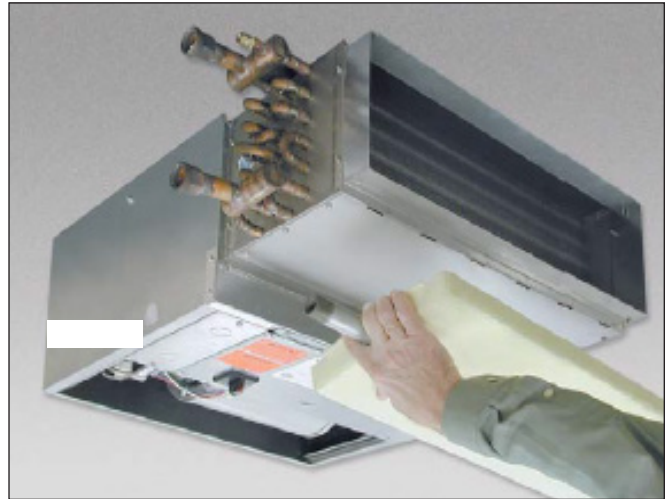
A variety of kW and voltage configurations are available. Options include door-interlock disconnects, low-voltage controls, and silent, solid-state relays. All control and electric-heat configurations include singlepoint-power connection and are cETL listed as an assembly.





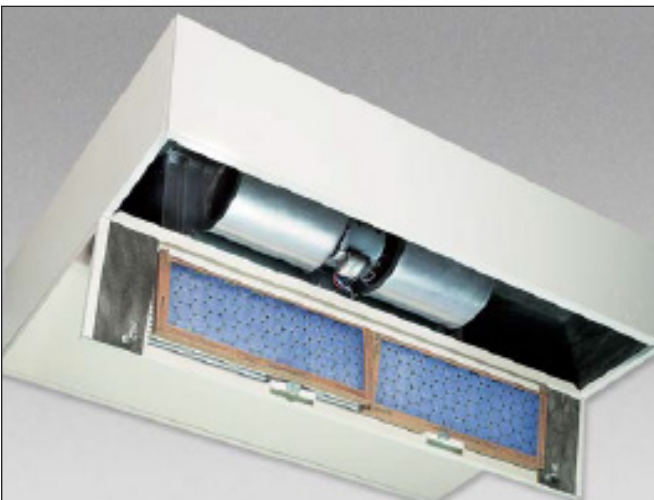
Electrical Enclosure

The bottom-hinged electrical enclosure provides access to a spacious electrical compartment. This compartment houses all electric-heat and control components. Terminal strips are furnished for simple power-wiring and control wiring connections. Multiple knockouts allow wiring entries from either side of the compartment.



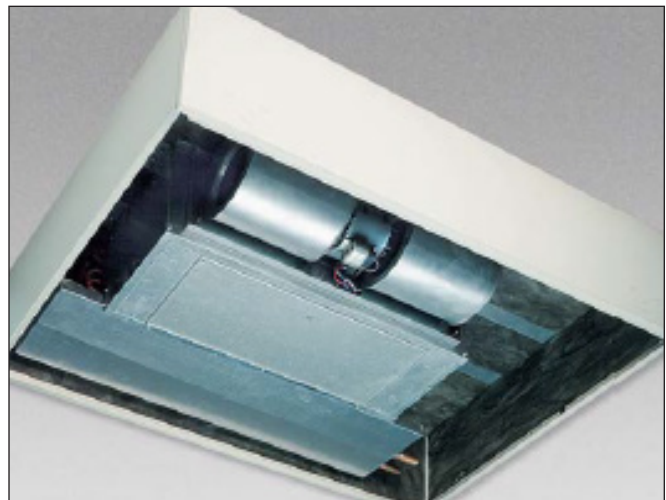
Drain Pan

Standard drain pans are externally insulated, single-wall, galvanized steel with an option for stainless steel. Drain pans are available with secondary drain connection. On concealed models, the THB Series drain pan is easily removable for cleaning or reversing connections.



Filters

1-inch throw-away filters are tight-fitting to prevent air bypass. Filters are easily removable from the bottom through the access panel.



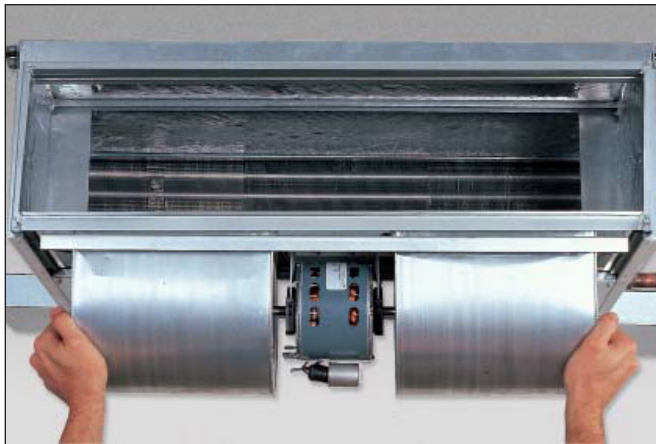
Access Panels

Full access to the unit for installation and service is available with both of the bottom panels removed. All electrical and piping services are accessed from the bottom.



Telescoping Bottom Panel

The telescoping bottom panel allows for fully recessing the unit while permitting service access into the ceiling plenum. The architectural ceiling panel is finished with a durable powder-coat paint.



Fan Deck

The fan assembly is easily removed without disconnecting the ductwork for service access to motors and blowers at, or away from, the unit.

Coils

All units are available in 2-pipe or 4-pipe configurations. The heating coil may be placed in the reheat or preheat position. On concealed models, heating and cooling coils are available with right, left or opposite-side connections.

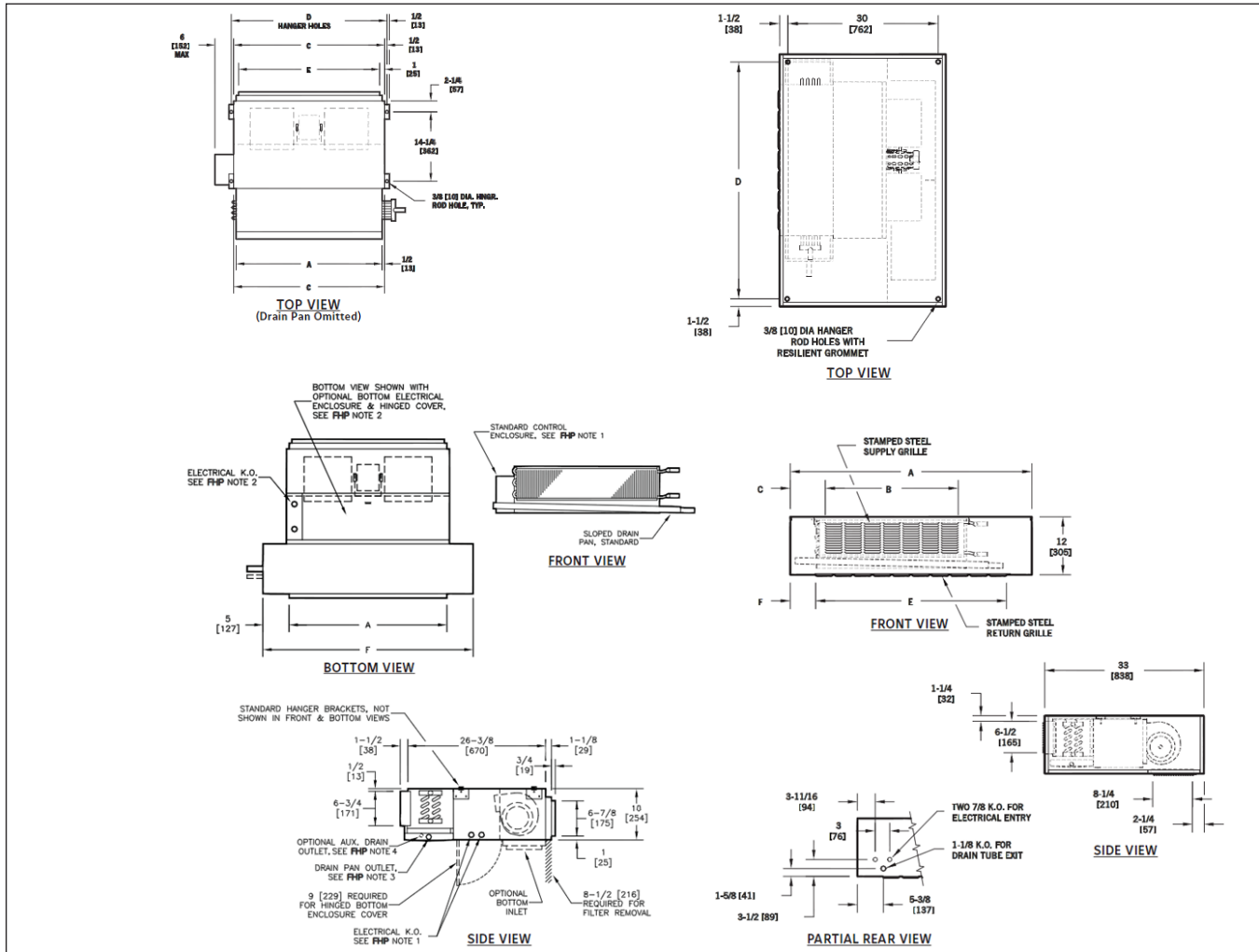
Powder-Coated Painted Surface

Exposed-cabinet model THBE, as well as ceiling-access panels and supply and return-air grilles, feature a powder-coat finish that resists scuffing, scratching, fading, and fingerprints.



Model THBP Plenum Return Dimensional Data

Model THBE Exposed Cabinet Dimensional Data



Unit Size	Dimension				
	A	C	D	E	F
20	20" [508]	21" [533]	22" [559]	19" [483]	30" [762]
25	26" [660]	27" [686]	28" [711]	25" [635]	36" [914]
30	30" [762]	31" [787]	32" [813]	29" [737]	40" [1016]
40	40" [1016]	41" [1041]	42" [1067]	39" [991]	50" [1270]
50	50" [1270]	51" [1295]	52" [1321]	49" [1245]	60" [1524]
60	60" [1524]	61" [1549]	62" [1575]	59" [1499]	70" [1778]

Unit Size	Dimension				
	A	C	D	E	F
20	40" [1016]	19 1/2" [495]	6 1/4" [159]	27 1/2" [699]	6 1/4" [159]
25	46" [1168]	23 1/2" [597]	6 1/4" [159]	35 1/2" [902]	5 1/4" [133]
30	50" [1270]	27 1/2" [699]	7 1/4" [184]	39 1/2" [1003]	5 1/4" [133]
40	60" [1524]	39 1/2" [1003]	6 1/4" [159]	47 1/2" [1207]	6 1/4" [159]
50	70" [1778]	47 1/2" [1207]	7 1/4" [184]	59 1/2" [1511]	5 1/4" [133]
60	80" [2032]	59 1/2" [1511]	6 1/4" [159]	67 1/2" [1715]	6 1/4" [159]

General Notes:

- All dimensions are inches [mm] and are +/- 1/4" [6mm]. Metric values are soft conversions.
- Left-hand unit shown; right-hand unit opposite.

THBP Notes:

- Standard control enclosure is mounted on unit side opposite cooling-coil connections. Unit casing includes (2) knockouts on each side. Provide sufficient clearance to access electrical controls and comply with applicable codes and ordinances.
- Optional bottom control enclosure with hinged cover replaces standard side-mounted enclosure and includes (2) additional knockouts on bottom of unit, on left side.

- Standard, externally foam-coated, galvanized-steel drain pan has 7/8" ODM copper outlet. Stainless steel drain pan has 3/4" MPT galvanized-steel outlet.
- Auxiliary drain outlet is 5/8" ODM copper or 3/8" MPT galvanized steel respectively.
- See coil connection drawings for coil connection sizes and locations.

THBE Notes:

- Electrical enclosure size and location may vary with optional features. Provide sufficient clearance to access electrical controls and comply with applicable codes and ordinances.

- Drain piping should be routed through casing opening indicated to provide proper drain slope.
- Louvered bottom panel is hinged and removable for access to filter and fan assembly.
- Fixed bottom panel is removable for access to optional electrical enclosure, coil, and drain pan.
- Internal insulation of field-piping may be required.
- Field-piping casing penetrations must be cut in the field to match individual job requirements.

Note: All data and dimensions are subject to change without notice.
Contact your Titus representative for more information.

Model THB: FAN COIL UNIT FEATURES

Standard Features:

Construction

All Units

- » AHRI Standard 440 certified and labeled
- » Galvanized-steel construction
- » ½" thick fiberglass insulation
- » 1½" duct discharge collar
- » Four-point hanger mounting holes

Plenum Units

- » Integral filter rack with 1" throwaway filter
- » Integral rear ducted return field reversible to bottom return

Exposed Units

- » Stamped louver supply air and return air grille
- » Durable powder coat paint
- » 18 gauge bottom panel construction

Coils

- » Cooling: 3 or 4-row chilled water or DX, heat-pump compatible
- » Heating: 1 or 2-row hot water - reheat or preheat position
- » 6 total rows of cooling and heating coils maximum
- » ½" O.D. seamless copper tubes
- » 0.016" tube wall thickness
- » High-efficiency, aluminum fin surface for optimizing heat transfer, pressure drop and carryover
- » Left-hand or right-hand, same or opposite side connections
- » Access to entering and leaving air sides for cleaning
- » Removable for service
- » Manual air vents

Drain Pans

- » Single wall, galvanized-steel, externally insulated
- » Positively sloped to drain connection
- » Removable, field-reversible
- » 7/8" O.D. primary drain connection

Fan Assemblies

- » Forward-curved, DWDI, centrifugal-type blowers
- » 115-volt, single phase, three tap PSC motors
- » Quick disconnect motor connections
- » Removable fan/motor deck for service

Electrical

- » cETL-Listed for safety compliance
- » Electrical junction box for field wiring terminations
- » Terminal block for field connections

Electrical Heat

- » ETL-Listed as an assembly for safety compliance
- » Integral electric heat assembly with removable elements for easy service
- » Automatic reset primary and back-up secondary thermal limits
- » Single point power connection
- » Bottom-hinged electrical enclosure

Optional Features:

Construction

All Units

- » Foil faced fiberglass insulation
- » Elastomeric, closed cell foam insulation

Plenum Units

- » Bottom return
- » 1" pleated filters (MERV 8)
- » Spare 1" throwaway filters
- » Telescoping bottom panels

Exposed Units

- » 1" pleated filters (MERV 8)
- » Double deflection discharge grille
- » Ducted supply and/or return

Coils

- » Automatic air vents
- » Stainless steel coil casings

Drain Pans

- » Stainless steel construction with external insulation
- » 5/8" O.D. secondary drain connection
- » Auxiliary drip pans, galvanized or stainless-steel

Fan Assemblies

- » 208-230, 220 & 277-volt, single-phase, three tap PSC motors

Electrical

- » Bottom-hinged-cover electrical enclosure
- » SCR fan-speed controller (high speed only)
- » Fan-relay packages
- » Silent, solid-state fan relays
- » Toggle-disconnect switch
- » Condensate-overflow switch (drain pan)
- » Main fusing
- » Unit and remote-mounted, three-speed fan switches

Model THB:

FAN COIL UNIT FEATURES

Electric Heat

- » Manual reset, secondary thermal limits
- » Door interlocking disconnect switches
- » Main fusing
- » Field installable with ETL-Listed kit
- » Silent relay/contactors

Piping Packages

- » Factory assembled - shipped loose for field installation
- » ½" and ¾", 2-way and 3-way, normally closed, two-position, electric, motorized valves
- » Isolation ball valves with memory stop
- » Fixed-flow and adjustable flow control devices
- » Unions and P/T ports
- » Floating point, modulating control valves
- » High pressure, close-off actuators (½" = 50 PSIG; ¾" = 25 PSIG)

Thermostats

- » Remote mounted analog, digital display, or programmable
- » 2-pipe and 4-pipe control sequences
- » Automatic and manual changeover
- » Integral, three speed, fan switches



605 Shiloh Road
Plano TX 75074
office: 972.212.4800
fax: 972.212.4884

Redefine your comfort zone.™ | www.titus-hvac.com

 **Titus**
Redefine your comfort zone.™